

# CURA

Warm and soft with a bright dimension



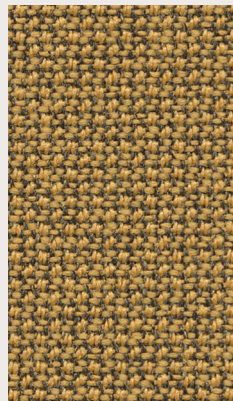


"Inspired by nature, the new Cura palette has a light, warm, and soft expression with a bright and colourful dimension."

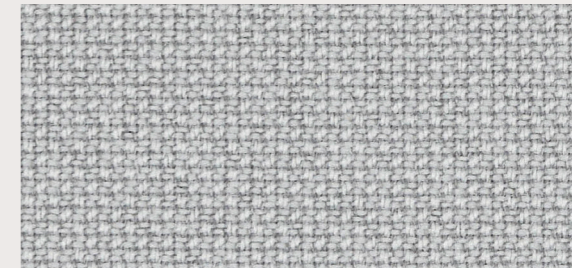
- Cenk Kivrikoglu, Creative Director.

#### A multiplicity of choices

With the introduction 20 new colours, the Cura palette encompasses a total of 50 colours - a complete, versatile, and harmonious selection of tones and shades across the full colour spectrum.



Cura 62083



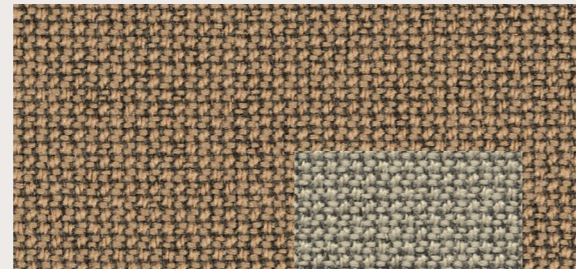
Cura 60000



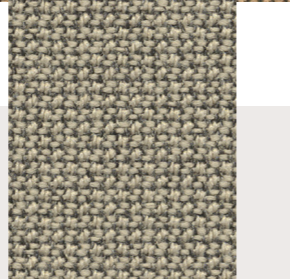
Creating a feeling of home  
With its warm, soft colour scale, matt, natural-looking texture and soft, voluminous touch, Cura brings a residential feel to all types of spaces.



Cura 61260



Cura 61233



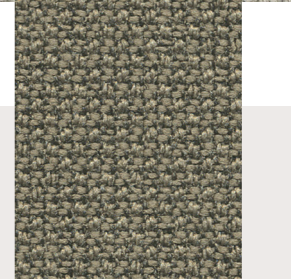
Cura 61168



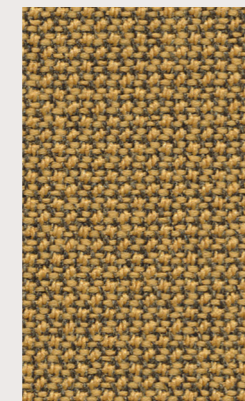
Cura 61259



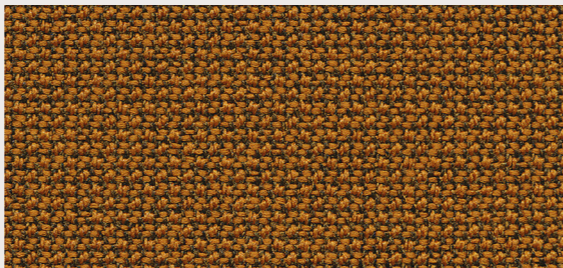
Cura 61232



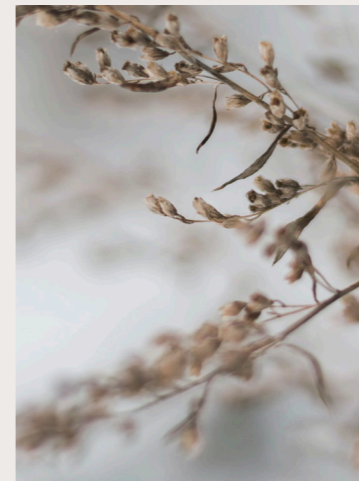
Cura 61169

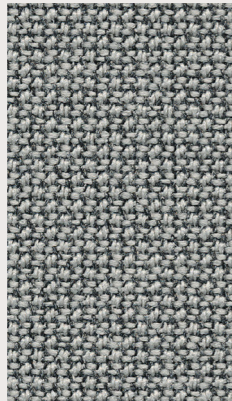


Cura 62083

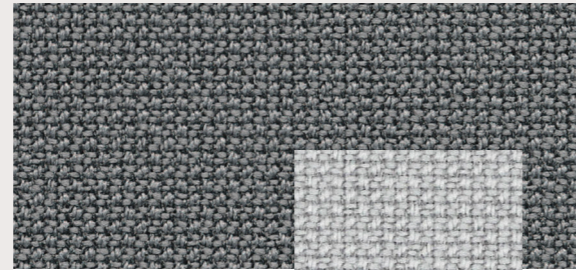


Cura 62082





Cura 60112



Cura 60110



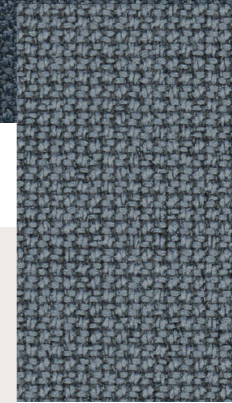
Cura 60000



Cura 60999

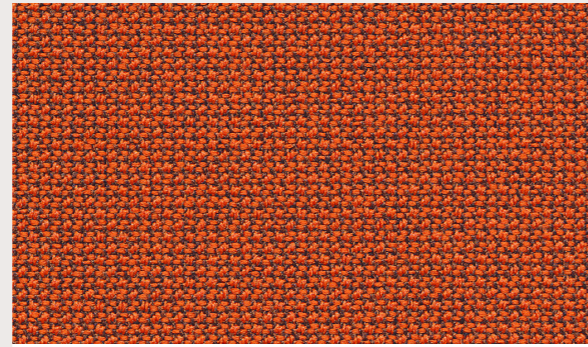


Cura 66166



Cura 60327



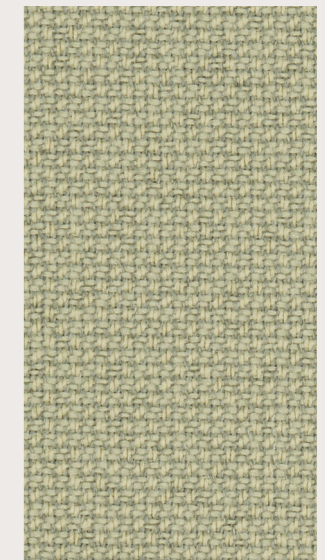


Cura 63078

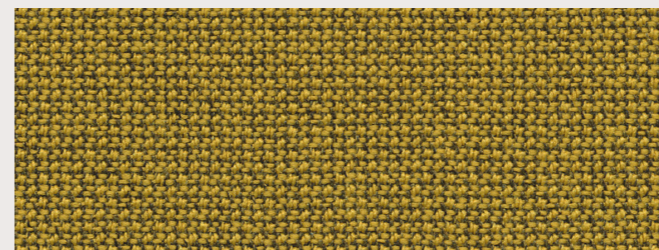


Fuses harmoniously with all types of surface materials

The Cura colours work in perfect harmony with a variety of surface materials, including moulded plastic elements, light and dark wood, stones, and metals.



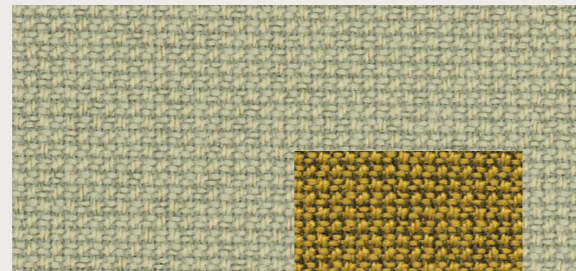
Cura 62125



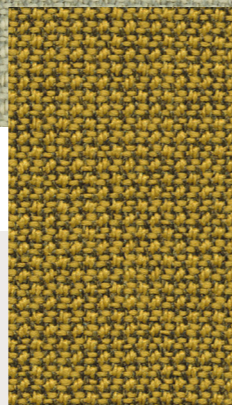
Cura 62084



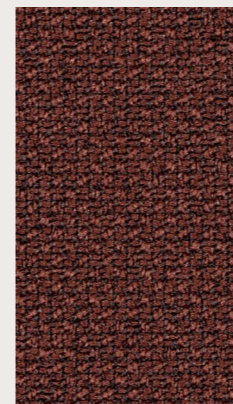
Cura 62126



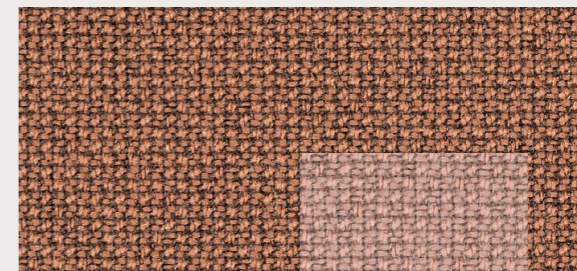
Cura 62125



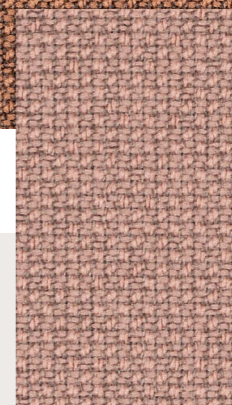
Cura 62084



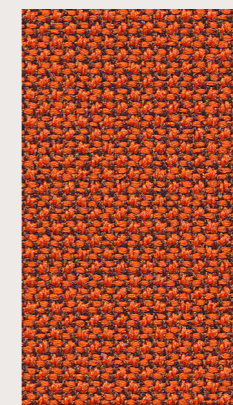
Cura 61258



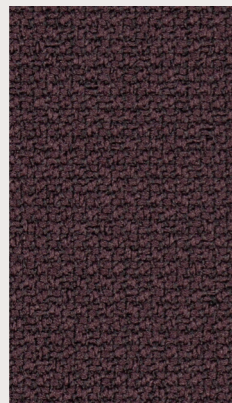
Cura 61257



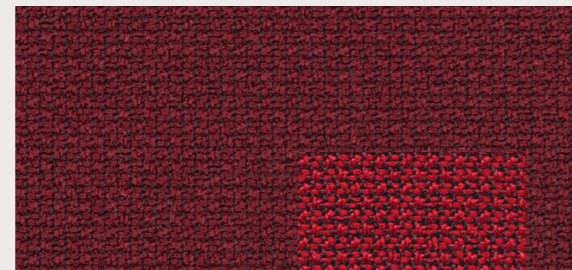
Cura 64240



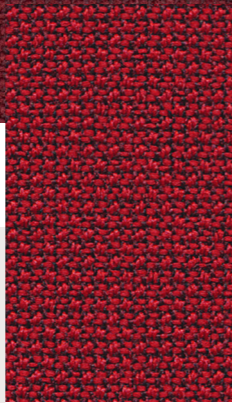
Cura 63078



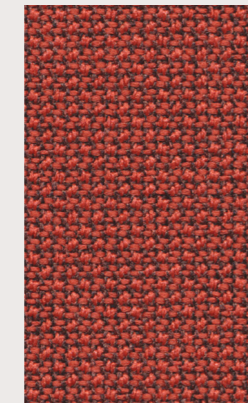
Cura 65137



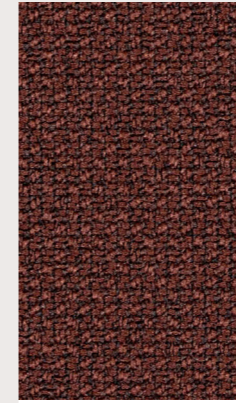
Cura 64252



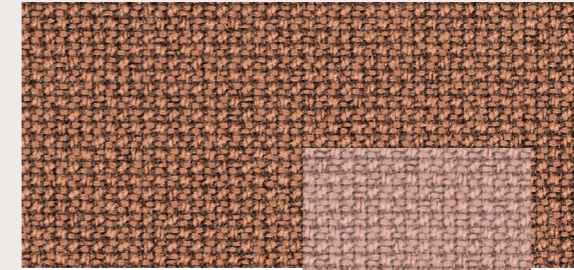
Cura 64013



Cura 64197



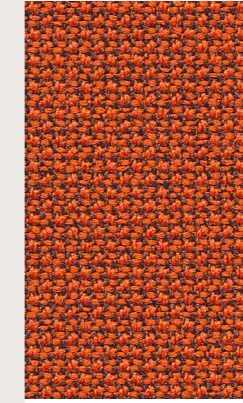
Cura 61258



Cura 61257



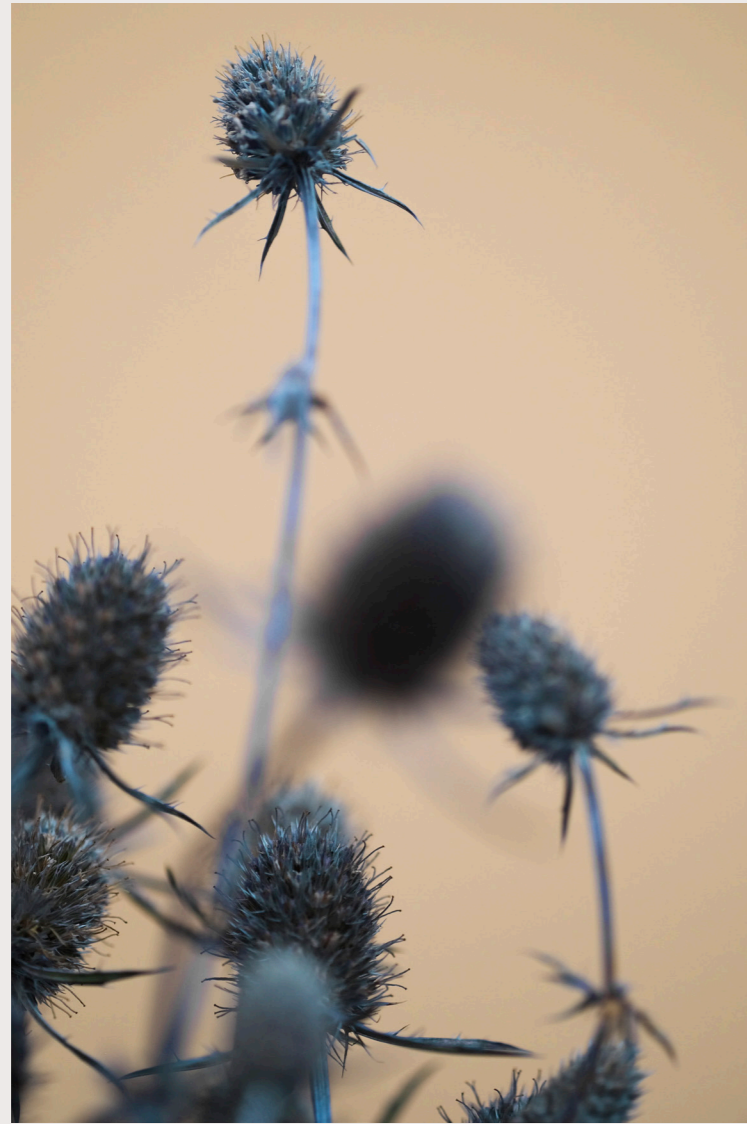
Cura 64240



Cura 63078

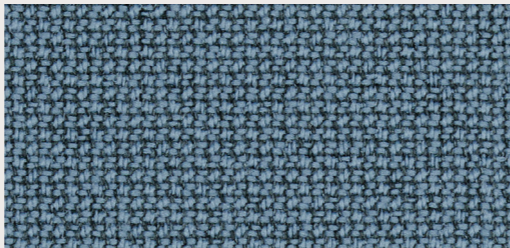




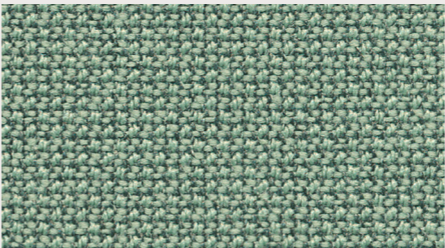


Feel-good shades for modern spaces

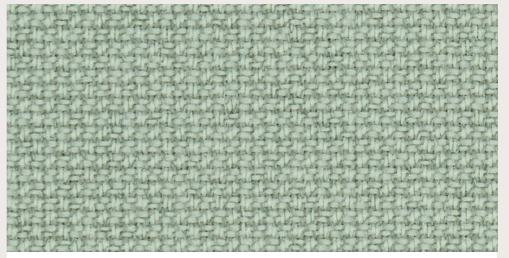
The Cura colours are feel-good shades designed for a multiplicity of applications and spaces – from hotels and restaurants to office environments.



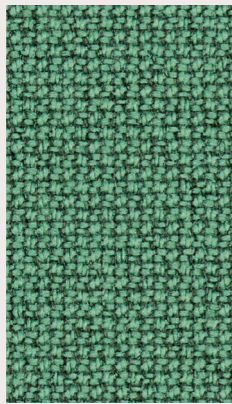
Cura 66239



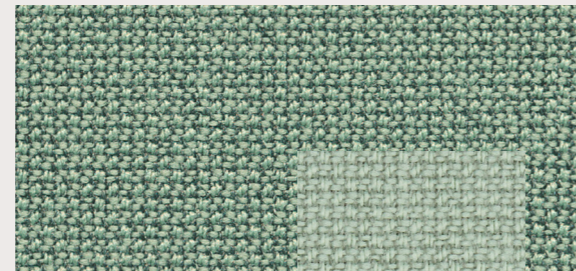
Cura 68186



Cura 68262



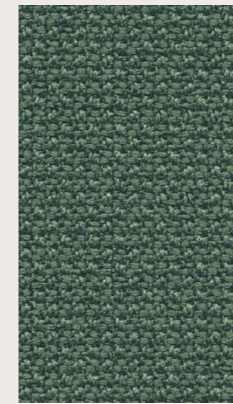
Cura 68263



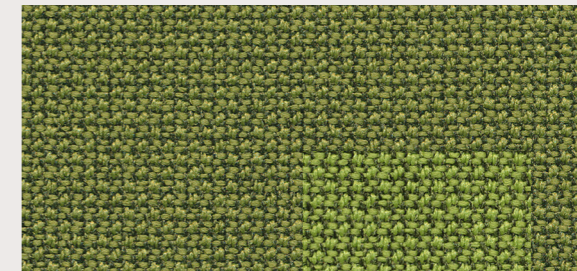
Cura 68186



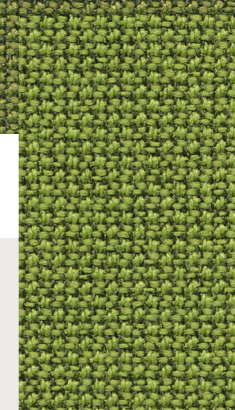
Cura 68262



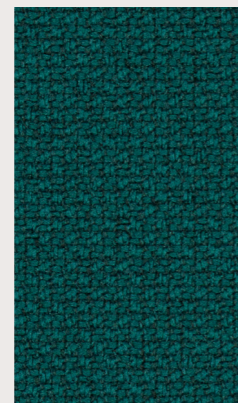
Cura 68182



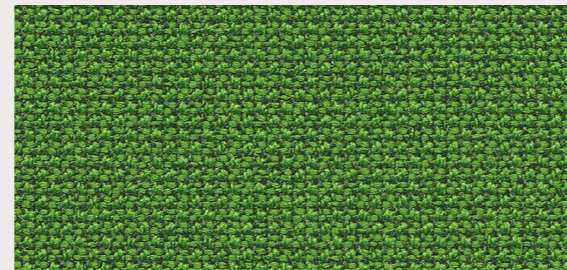
Cura 68181



Cura 68180



Cura 68264



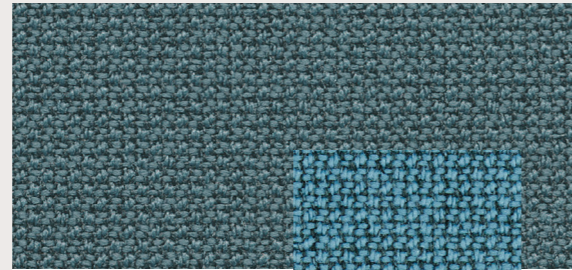
Cura 68183



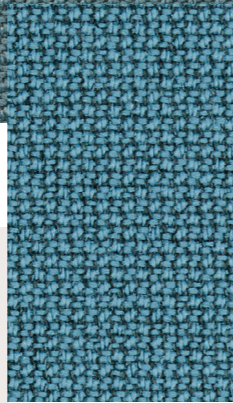
Cura 68261



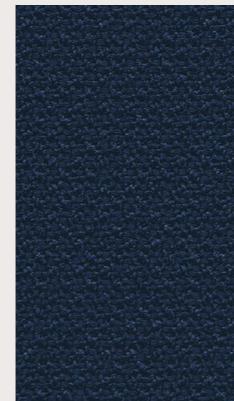
Cura 66165



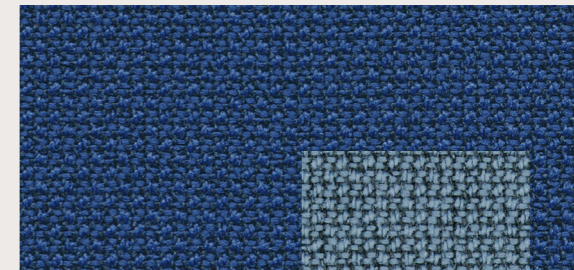
Cura 66167



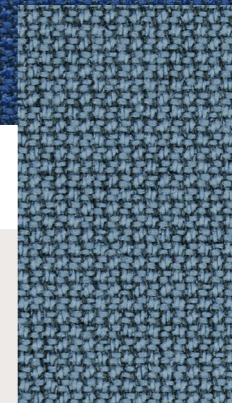
Cura 66240



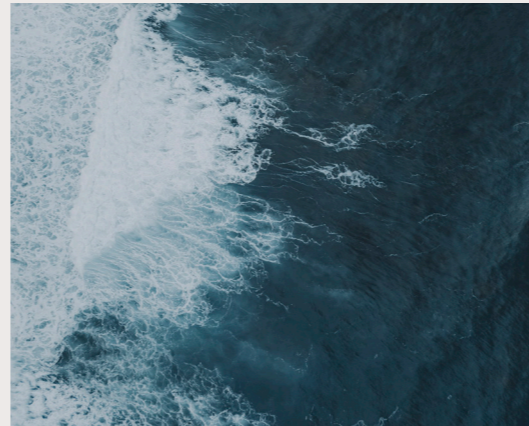
Cura 66169

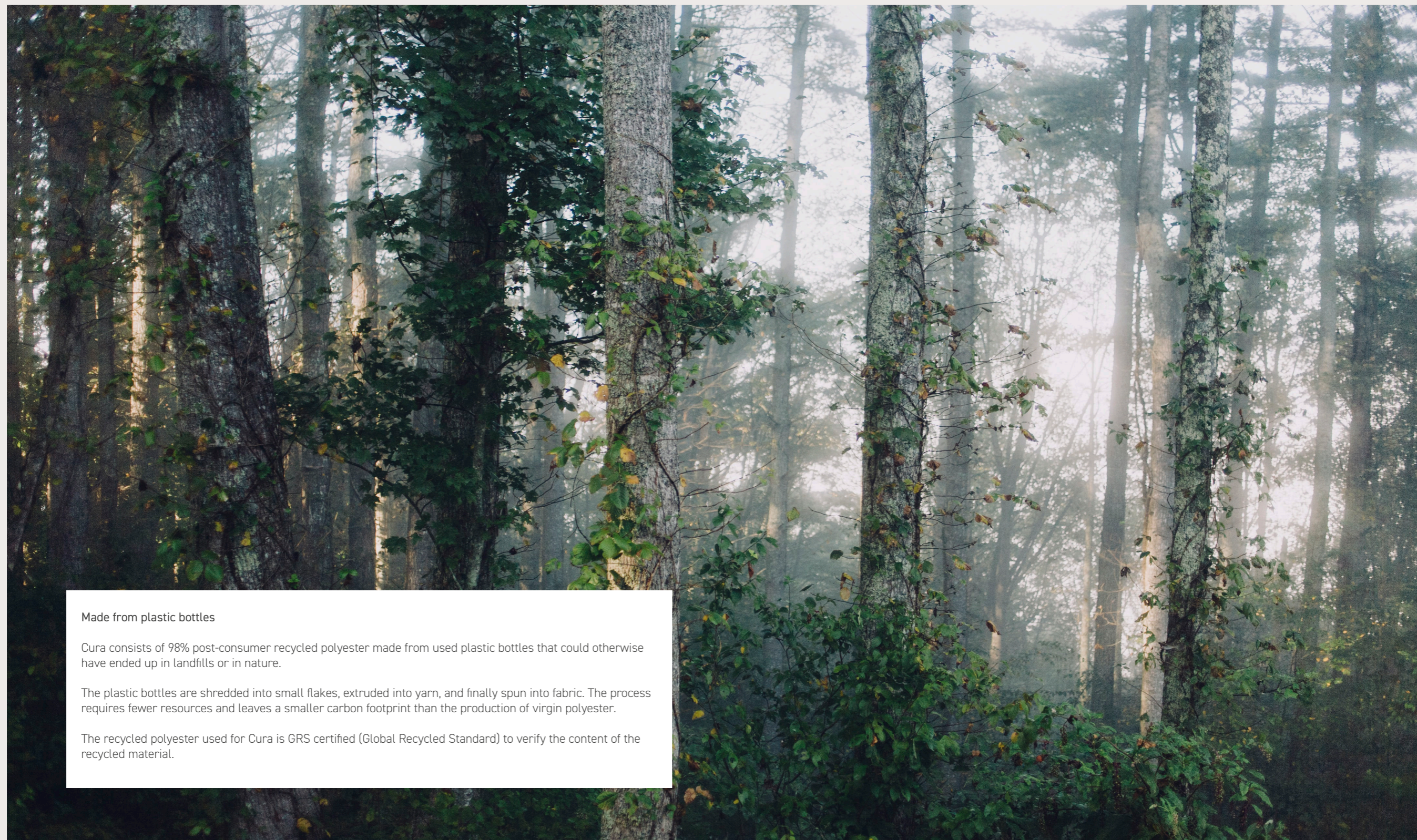


Cura 65105



Cura 66239



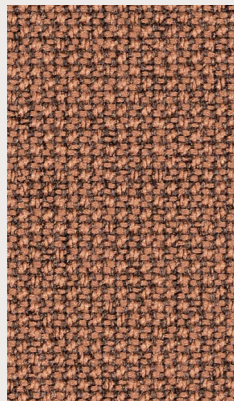


#### Made from plastic bottles

Cura consists of 98% post-consumer recycled polyester made from used plastic bottles that could otherwise have ended up in landfills or in nature.

The plastic bottles are shredded into small flakes, extruded into yarn, and finally spun into fabric. The process requires fewer resources and leaves a smaller carbon footprint than the production of virgin polyester.

The recycled polyester used for Cura is GRS certified (Global Recycled Standard) to verify the content of the recycled material.



Cura 61257

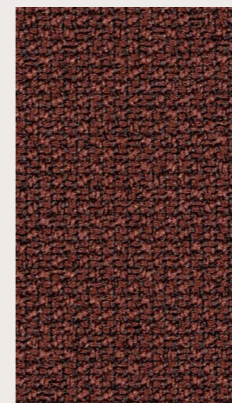
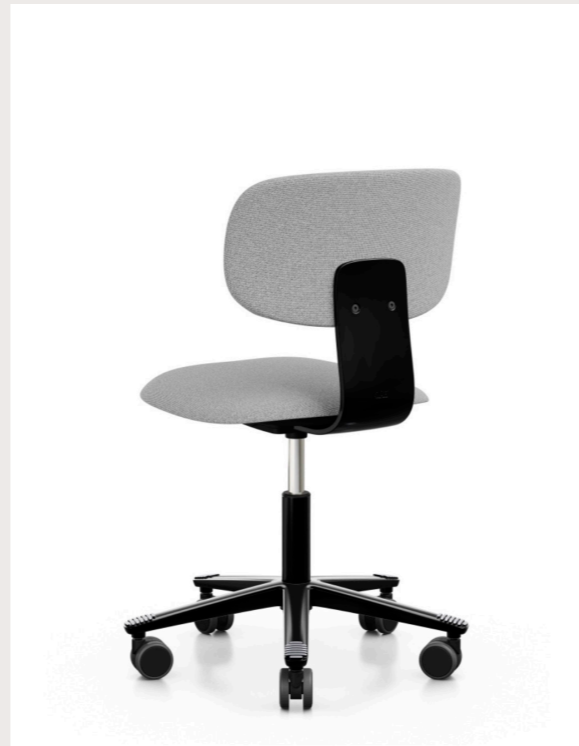


Flokk

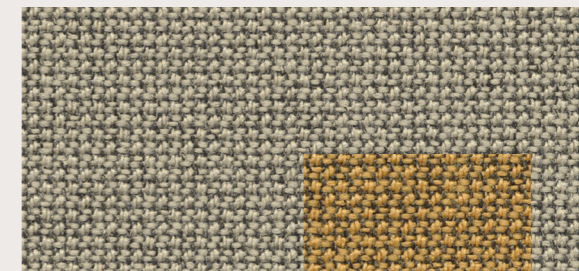
"We chose Cura for the HÅG Tion task chair because of the fabric's high content of post-consumer recycled polyester that reinforces our chair's strong environmental profile. With the HÅG Tion chair we continue to define the standards of environmentally conscious furniture."

"The Cura series gave us the opportunity to provide a cohesive colour match, complimenting the HÅG Tion Palette. This allowed us to further emphasize the colours developed for our recycled plastics, all the while highlighting the carefully curated combinations of HÅG Tion."

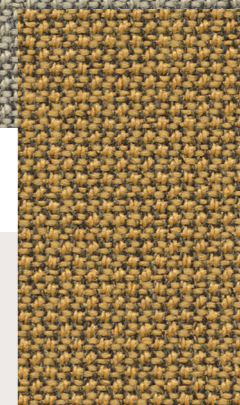
"The soft, warm and nature inspired colours of Cura adds to the approachability of the HÅG Tion. Suggestive of the chair's flexibility, it can fit anywhere - at home or in the office."



Cura 61258



Cura 61168



Cura 62083

Learn more about the Cura fabric - visit [www.gabriel.dk](http://www.gabriel.dk)