

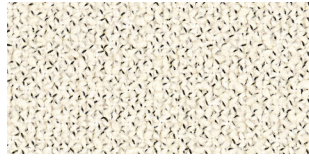
# POLYESTER FABRICS

---

CAPSULE COLLECTION  
by Gabriel



Cubic 61128



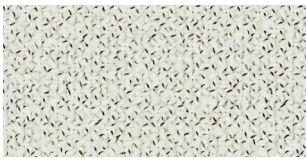
Grain 61250



Cyber 1102



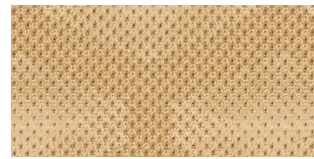
Grain 61253



Grain 60300



Cyber 1101



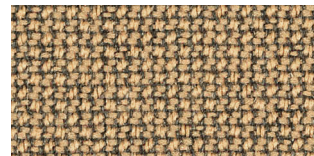
Cubic 61270



Blend 1401



Medley 61189



Cura 61233



Cura 61232



Medley 61003



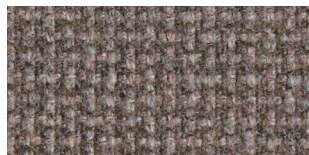
Medley 61002



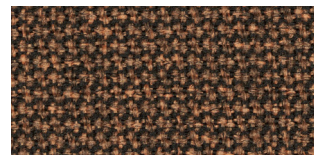
Felicity 61164



Cura 61169



Blend 2101



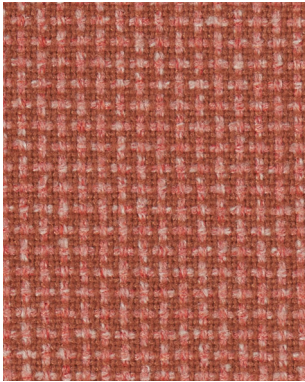
Renewed Loop 63133



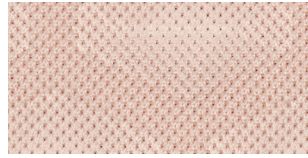
Renewed Loop 61283



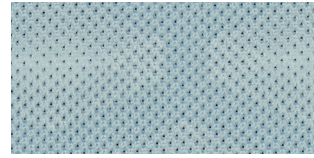
Renewed Loop 63132



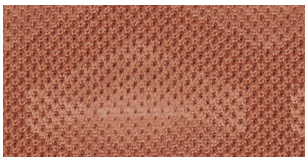
Blend 2501



Cubic 64117



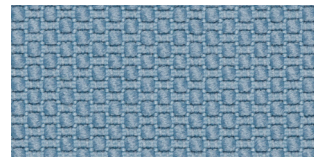
Cubic 66249



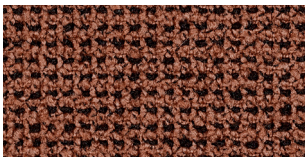
Cubic 61269



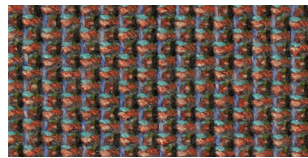
Cyber 2201



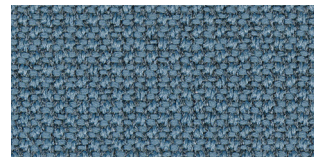
Felicity 66161



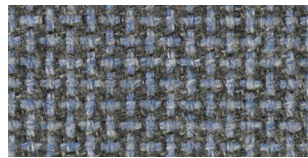
Grain 61254



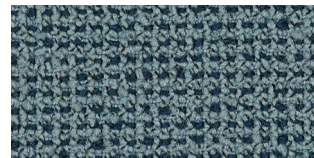
Cyber 1401



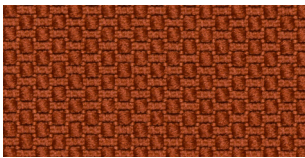
Cura 66167



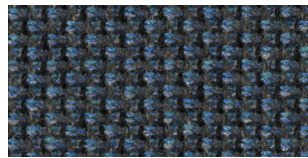
Blend 3201



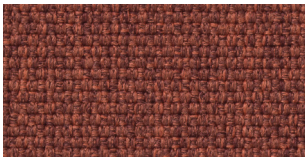
Grain 66237



Felicity 63089



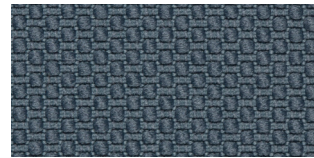
Cyber 1601



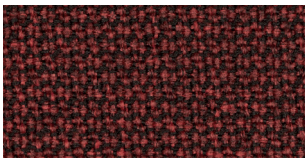
Medley 63063



Medley 66010



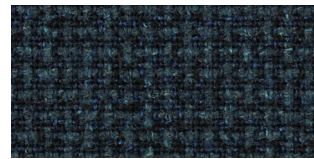
Felicity 66162



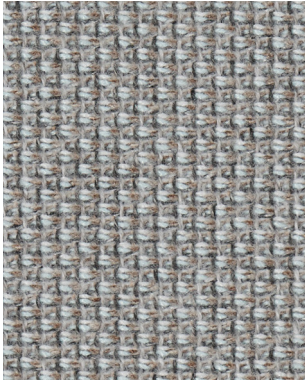
Renewed Loop 64262



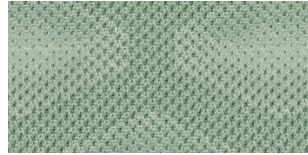
Cura 66165



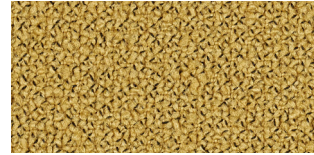
Blend 1101



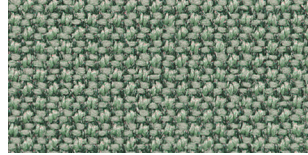
Cyber 1901



Cubic 68275



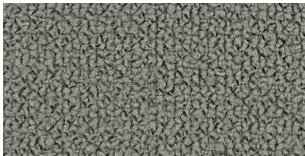
Grain 62122



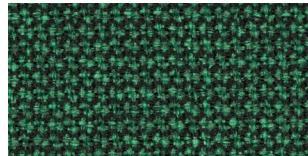
Cura 68186



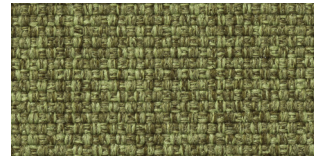
Cyber 1701



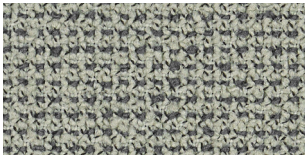
Grain 60301



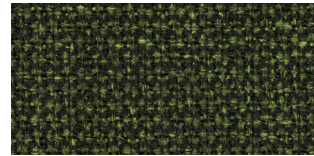
Renewed Loop 68294



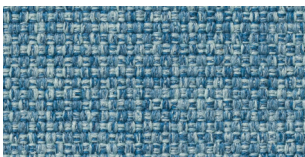
Medley 68005



Grain 60322



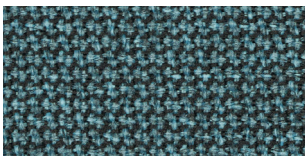
Renewed Loop 68285



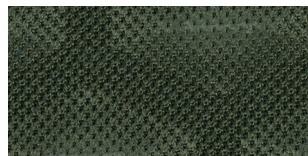
Medley 67006



Renewed Loop 68288



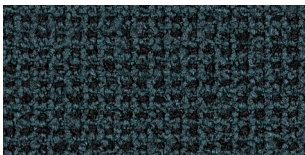
Renewed Loop 67131



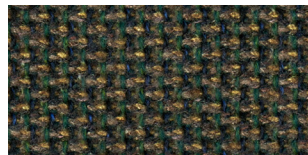
Cubic 68277



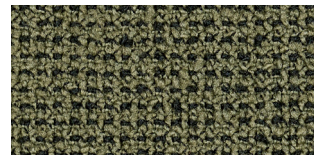
Cura 68261



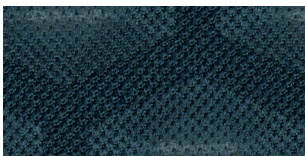
Grain 66233



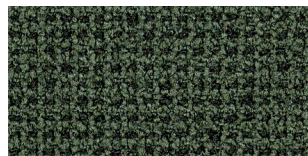
Cyber 1302



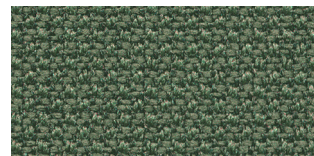
Grain 68259



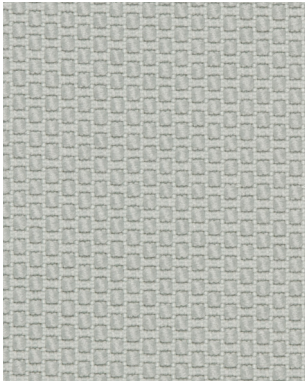
Cubic 67043



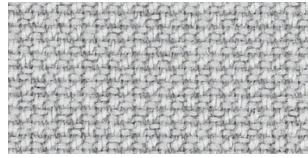
Grain 68260



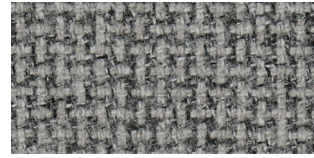
Cura 68182



Felicity 60105



Cura 60000



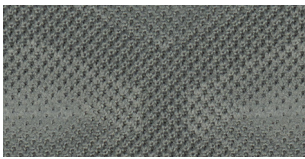
Blend 1201



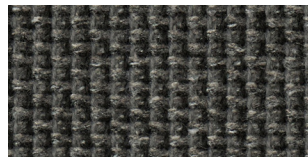
Cura 60110



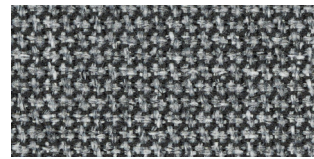
Medley 60167



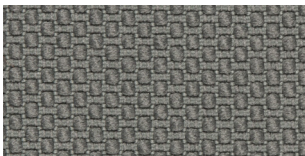
Cubic 60011



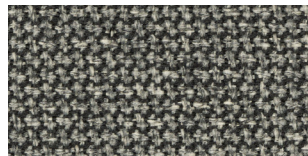
Cyber 2901



Renewed Loop 60339



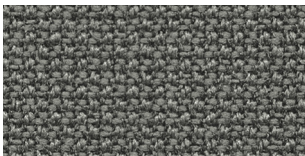
Felicity 60106



Renewed Loop 61281



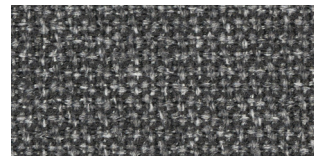
Cura 60019



Cura 60109



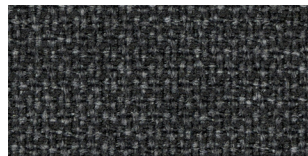
Medley 60004



Renewed Loop 60341



Blend 1601



Renewed Loop 60342



Medley 60999



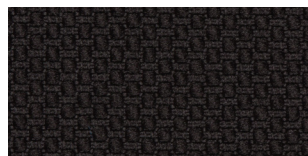
Cyber 3101



Grain 60328











Cubic 60999



Felicity 60999

# SPECIFICATIONS

Design	Blend	Cubic	Cura	Cyber	Felicity	Grain	Medley	Renewed Loop
<b>Application</b>	Upholstery	Upholstery	Upholstery	Upholstery	Upholstery	Upholstery	Upholstery Panel	Upholstery Panel Screen
<b>Composition</b>	100% post-consumer recycled polyester	Fabric: 100% polyester Foam: 5 mm 50 kg non fr pu foam Backing: Circular knit polyester	98% post-consumer recycled polyester 2% polyester	100% post-consumer recycled polyester	100% post-consumer recycled polyester	92%/80% post-consumer recycled polyester/ 8%/20% polyester	100% polyester	100% post-consumer/postindustrial recycled polyester  (contains 3-10% textile waste)
<b>Weight</b>	13.39 oz./lin.yd. 415 g/lm	34.19 oz./lin.yd. 1060 g/lm	13.55 oz./lin.yd. 420 g/lm	18.39 oz./lin.yd. 570 g/lm	13.87 oz./lin.yd. 430 g/lm	19.84 oz./lin.yd. 615 g/lm	16.45 oz./lin.yd. 510 g/lm	11.93 oz./lin.yd. 370 g/lm
<b>Width</b>	55" 140 cm	55" 140 cm	55" 140 cm	55" 140 cm	55" 140 cm	55" 140 cm	55" 140 cm	55" 140 cm
<b>Abrasion</b>	100,000 Wyzenbeek 100,000 Martindale	100,000 Wyzenbeek 110,000 Martindale	100,000 Wyzenbeek 100,000 Martindale	100,000 Wyzenbeek 120,000 Martindale	100,000 Wyzenbeek 90,000 Martindale	100,000 Wyzenbeek 100,000 Martindale	100,000 Wyzenbeek 75,000 Martindale	100,000 Wyzenbeek 100,000 Martindale
<b>Pilling</b>	4-5	4-5	4-5	4-5	5	5	4	4-5
<b>Light fastness</b>	7-8	5-7	5-8	7-8	5-7	5-7	5-7	7-8
<b>Rubbing fastness</b>	4-5/4-5	4-5/4-5	4-5/4-5	4-5/4-5	4-5/4-5	4-5/4-5	4-5/4-5	4-5/4-5
<b>US ACT</b>	<b>A</b> ASTM D4157 Wyz abrasion (heavy duty)  ★ ASTM D3511 Pilling  * AATCC 16 Light fastness  ☹ AATCC 8 or 116 Wet/dry crocking  🔥 CA TB 117-2013	<b>A</b> ASTM D4157 Wyz abrasion (heavy duty)  ★ ASTM D3511 Pilling  * AATCC 16 Light fastness  ☹ AATCC 8 or 116 Wet/dry crocking  🔥 CA TB 117-2013	<b>A</b> ASTM D4157 Wyz abrasion (heavy duty)  ★ ASTM D3511 Pilling  * AATCC 16 Light fastness  ☹ AATCC 8 or 116 Wet/dry crocking  🔥 CA TB 117-2013  🔥 ASTM E 84 Class I	<b>A</b> ASTM D4157 Wyz abrasion (heavy duty)  ★ ASTM D3511 Pilling  * AATCC 16 Light fastness  ☹ AATCC 8 or 116 Wet/dry crocking  🔥 CA TB 117-2013	<b>A</b> ASTM D4157 Wyz abrasion (heavy duty)  ★ ASTM D3511 Pilling  * AATCC 16 Light fastness  ☹ AATCC 8 or 116 Wet/dry crocking  🔥 CA TB 117-2013	<b>A</b> ASTM D4157 Wyz abrasion (heavy duty)  ★ ASTM D3511 Pilling  * AATCC 16 Light fastness  ☹ AATCC 8 or 116 Wet/dry crocking  🔥 CA TB 117-2013  🔥 ASTM E 84 Class I	<b>A</b> ASTM D4157 Wyz abrasion (heavy duty)  ★ ASTM D3511 Pilling  * AATCC 16 Light fastness  ☹ AATCC 8 or 116 Wet/dry crocking  🔥 CA TB 117-2013  🔥 ASTM E 84 Class I	
<b>Environment</b>	OEKO-TEX® STANDARD 100 EU Ecolabel	OEKO-TEX® STANDARD 100	OEKO-TEX® STANDARD 100 EU Ecolabel	OEKO-TEX® STANDARD 100 EU Ecolabel	OEKO-TEX® STANDARD 100 EU Ecolabel	OEKO-TEX® STANDARD 100	OEKO-TEX® STANDARD 100	OEKO-TEX® STANDARD 100 EU Ecolabel
<b>Complete specifications</b>								

Fabrics available and ready to ship EXworks Grand Rapids, MI  
Full colour scales available on [www.gabriel.dk](http://www.gabriel.dk)  
Will pass other global standards  
Subject to changes and colour differences